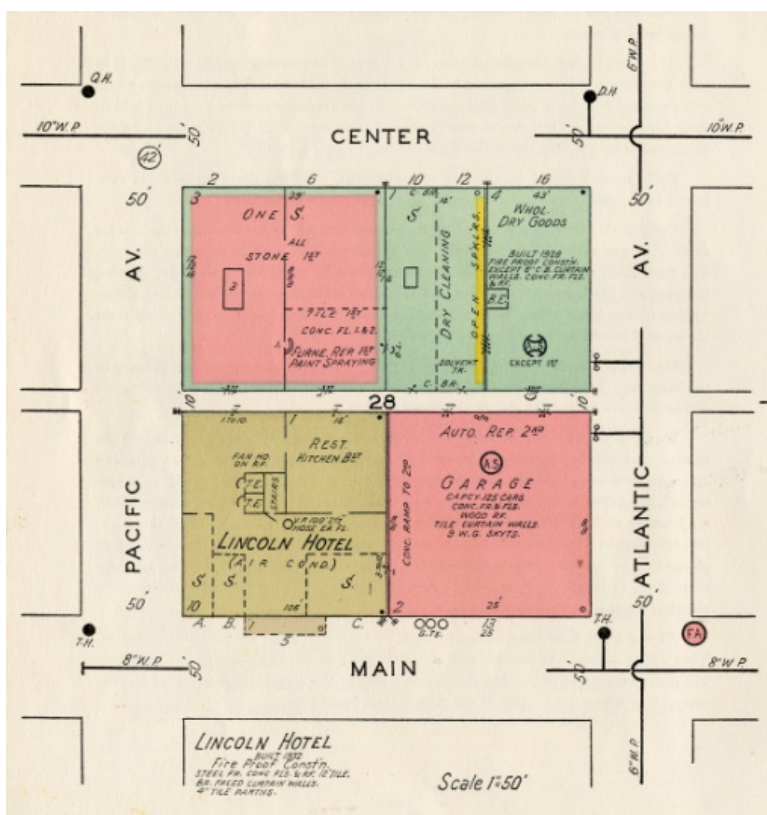


# Guide to the Sanborn Company Fire Insurance Maps

1884-1992

23 rolls + 130 cards.



## Abstract

Large scale maps for cities in Missouri, Arkansas and Kentucky, produced by the Sanborn Map Company of Pelham, New York, originally for use by fire insurance companies and underwriters. Maps show the size, shape and construction of residential and commercial buildings, and indicate the presence of fire walls, sprinklers, windows and doors, and indicate roofing and construction material. Additionally, they provide street names and widths, house and block numbers, property boundaries, and building use.

Prepared by Dr. Lisa K. Speer, 2007

Special Collections and Archives

Kent Library

One University Plaza, MS 4600

Southeast Missouri County University

Cape Girardeau, MO 63701

Phone: (573) 651-2245; Fax: (573) 651-2666; Email: [semoarchives@semo.edu](mailto:semoarchives@semo.edu)

## Descriptive Overview

**Extent:** 23 rolls of microfilm and 130 microfiche cards.

**Citation:** *Sanborn Insurance Maps of [City, County]* (New York: Sanborn Map Company, [date]), plate [no.], Special Collections and Archives, Kent Library, Southeast Missouri County University.

**Restrictions:** Some maps are only available through microfilm

### Historical Note

Produced since 1867 by the Sanborn Map Company of Pelham, New York, these large scale maps were originally prepared for use by fire insurance companies and underwriters. Agents used the maps to determine how much, if any fire insurance, would be sold to an individual client based on the degree of risk associated with an individual structure. The maps show the size, shape and construction of residential and commercial buildings, and indicate the presence of fire walls, sprinklers, windows and doors, and indicate roofing and construction material. Additionally, they provide street names and widths, house and block numbers, property boundaries, and building use. Water mains, fire hydrants and fire alarm boxes are also indicated. The company is named for its founder, D. A. Sanborn.

### Scope and Content

23 reels of microfilm containing maps for 234 cities and town in the Counties of Arkansas, Kentucky and Missouri, primarily for the years between 1945 and 1992; and 130 microfiche cards containing earlier maps for towns and cities in Southeast Missouri, 1884-1951. The film and fiche reproductions are in black and white.

<b>Series I</b>	<b>Missouri</b>				
<b>City/Township</b>	<b>County</b>	<b>Date</b>	<b>Box #</b>	<b>Item/Reel Number</b>	<b>Format</b>
Arbor Terrace	St. Louis	1978	1624	MO-12 (St. Louis, Vol. 16)	Film
Arbor Terrace	St. Louis	1980	1624	MO-12 (St. Louis, Vol. 16)	Film
Arcadia	Iron	1908	1897	Item 069 (Ironton, 1908)	Fiche
Arcadia	Iron	1914	1897	Item 069-70 (Ironton, 1914)	Fiche
Arcadia	Iron	1927	1897	Items 070-071(Ironton, 1927)	Fiche
Aurora	Lawrence	1962	1671	MO-1 (1-18)	Film
Avondale	Clay	1964	1671	MO-3 (N. Kansas City)	Film
Bernie	Stoddard	1914	1897	Item 001	Fiche
Bernie	Stoddard	1929	1897	Item 001	Fiche
Bertrand	Mississippi	1911	1897	Item 002	Fiche
Bertrand	Mississippi	1919	1897	Item 002	Fiche
Bismarck	St. Francois	1915	1897	Item 003	Fiche
Bismarck	St. Francois	1927	1897	Item 003	Fiche
Bloomfield	Stoddard	1910	1897	Item 004	Fiche
Bloomfield	Stoddard	1919	1897	Item 004	Fiche
Bolivar	Polk	1955	1671	MO-1 (1-6)	Film
Bonne Terre	St. Francois	1894	1897	Item 005	Fiche
Bonne Terre	St. Francois	1900	1897	Item 005	Fiche
Bonne Terre	St. Francois	1908	1897	Items 005-007	Fiche
Bonne Terre	St. Francois	1915	1897	Item 008	Fiche
Bonne Terre	St. Francois	1927	1897	Item 009	Fiche
Bowling Green	Pike	1946	1671	MO-1 (1-6)	Film
Bragg City	Pemiscot	1919	1897	Item 076 (Kennett, 1919)	Fiche
Bragg City	Pemiscot	1928	1897	Items 076-078 (Kennett, 1928)	Fiche
Brunswick	Chariton	1950	1671	MO-1 (1-6)	Film
Butler	Bates	1957	1671	MO-1 (1-7)	Film
Cantwell	St. Francois	1927	1897	Item 037 (Desloge, 1927)	Fiche
Cape Girardeau	Cape Girardeau	1884	1897	Item 010	Fiche
Cape Girardeau	Cape Girardeau	1884	WMC 001	Folder 001	Copy
Cape Girardeau	Cape Girardeau	1893	1897	Item 010	Fiche
Cape Girardeau	Cape Girardeau	1893	WMC 001	Folder 001	Copy
Cape Girardeau	Cape Girardeau	1900	1897	Item 011	Fiche
Cape Girardeau	Cape Girardeau	1900	WMC 001	Folder 002	Copy
Cape Girardeau	Cape Girardeau	1908	1897	Items 012-014	Fiche
Cape Girardeau	Cape Girardeau	1908	WMC 001	Folder 003	Copy
Cape Girardeau	Cape Girardeau	1915	1897	Items 014-019	Fiche
Cape Girardeau	Cape Girardeau	1915	WMC 001	Folder 002	Copy
Cape Girardeau	Cape Girardeau	1923	1897	Items 018-022	Fiche
Cape Girardeau	Cape Girardeau	1923	WMC 001	Folder 004	Copy
Cape Girardeau	Cape Girardeau	1931	1897	Items 022-027	Fiche
Cape Girardeau	Cape Girardeau	1931	WMC 001	Folder 005	Copy
Cape Girardeau	Cape Girardeau	1961	1671	MO-1 (1-35)	Film
Cardwell	Dunklin	1911	1897	Item 028	Fiche
Cardwell	Dunklin	1928	1897	Item 028	Fiche
Carthage	Jasper	1954	1671	MO-1 (1-34)	Film
Caruthersville	Pemiscot	1900	1897	Item 029	Fiche
Caruthersville	Pemiscot	1906	1897	Item 029	Fiche
Caruthersville	Pemiscot	1911	1897	Item 029	Fiche
Caruthersville	Pemiscot	1919	1897	Item 030	Fiche

<b>Series I</b>	<b>Missouri</b>				
<b>City/Township</b>	<b>County</b>	<b>Date</b>	<b>Box #</b>	<b>Item/Reel Number</b>	<b>Format</b>
Caruthersville	Pemiscot	1928	1897	Items 030-031	Fiche
Caruthersville	Pemiscot	1951	1671	MO-1 (1-12)	Film
Cassville	Barry	1950	1671	MO-1 (1-5)	Film
Centralia	Boone	1950	1671	MO-1 (1-2, 5-8)	Film
Charlack	St. Louis	1978	1624	MO-11 (St. Louis 1978, Vol. 13A)	Film
Charleston	Mississippi	1886	1897	Item 032	Fiche
Charleston	Mississippi	1893	1897	Item 032	Fiche
Charleston	Mississippi	1900	1897	Items 032-033	Fiche
Charleston	Mississippi	1911	1897	Item 033	Fiche
Charleston	Mississippi	1919	1897	Items 033-034	Fiche
Charleston	Mississippi	1927	1897	Items 034-035	Fiche
Chillicothe	Livingston	1963	1671	MO-1 (1-21)	Film
Clayton	St. Louis	1978	1624	MO-11 (St. Louis 1978, Vol. 13)	Film
Clayton	St. Louis	1984	1624	MO-11 (St. Louis 1984, Vol. 13S)	Film
Clayton	St. Louis	1990	1624	MO-11 (St. Louis 1990, Vol. 13S)	Film
Clayton	St. Louis	1992	1624	MO-11 (St. Louis 1992, Vol. 13S)	Film
Clayton Twp.	St. Louis	1978	1624	MO-11 (St. Louis 1978, Vol. 13)	Film
Clayton Twp.	St. Louis	1984	1624	MO-11 (St. Louis 1978, Vol. 13)	Film
Clayton Twp.	St. Louis	1990	1624	MO-11 (St. Louis 1990, Vol. 13S)	Film
Clayton Twp.	St. Louis	1992	1624	MO-11 (St. Louis 1992, Vol. 13S)	Film
Clinton	Henry	1957	1624	MO-1 (1-15)	Film
Columbia	Boone	1968	1624	MO-1 (1-44)	Film
Cool Valley	St. Louis	1978	1624	MO-12 (St. Louis 1978, Vol. 18)	Film
Cool Valley	St. Louis	1980	1624	MO-12 (St. Louis 1980, Vol. 18)	Film
Country Club Hills	St. Louis	1978	1624	MO-12 (St. Louis 1978, Vol. 18)	Film
Country Club Hills	St. Louis	1980	1624	MO-12 (St. Louis 1980, Vol. 18)	Film
Crawley	St. Francois	1927	1897	Items 056-059 (Flat River, 1927)	Fiche
Crestwood	St. Louis	1976	1738	MO-13 (St. Louis 1976, Vol. 21/22)	Film
Dellwood	St. Louis	1978	1624	MO-12 (St. Louis 1978, Vol. 18)	Film
Dellwood	St. Louis	1980	1624	MO-12 (St. Louis 1980, Vol. 18)	Film
Desloge	St. Francois	1908	1897	Item 036	Fiche
Desloge	St. Francois	1915	1897	Item 036	Fiche
Desloge	St. Francois	1927	1897	Items 037-038	Fiche
DeSoto	Jefferson	1947	1671	MO-1 (1-14)	Film
Dexter	Stoddard	1895	1897	Item 039	Fiche
Dexter	Stoddard	1900	1897	Item 039	Fiche
Dexter	Stoddard	1906	1897	Item 039-040	Fiche
Dexter	Stoddard	1911	1897	Item 040	Fiche
Dexter	Stoddard	1923	1897	Item 040-041	Fiche
Doe Run	St. Francois	1908	1897	Item 053 (Flat River, 1908)	Fiche
Doe Run	St. Francois	1915	1897	Items 053-056 (Flat River, 1915)	Fiche
Doe Run	St. Francois	1927	1897	Items 043-044 (Elvins, 1927)	Fiche
Doniphan	Ripley	1910	1897	Item 042	Fiche
Doniphan	Ripley	1914	1897	Item 042	Fiche
Doniphan	Ripley	1928	1897	Item 042	Fiche
Doniphan	Ripley	1951	1671	MO-1 (1-2)	Film
Duenwig	Jasper	1963	1671	MO-1 (Joplin 1963)	Film
Duenwig	Jasper	1967	1671	MO-1 (Joplin 1697)	Film
East Federal	St. Francois	1927	1897	Items 056-059 (Flat River, 1927)	Fiche

<b>Series I</b>	<b>Missouri</b>				
<b>City/Township</b>	<b>County</b>	<b>Date</b>	<b>Box #</b>	<b>Item/Reel Number</b>	<b>Format</b>
East Flat River	St. Francois	1927	1897	Items 056-059 (Flat River, 1927)	Fiche
Eldon	Miller	1952	1671	MO-1 (1-6)	Film
Eldorado Springs	Cedar	1949	1671	MO-1 (1-9)	Film
Elvins	St. Francois	1908	1897	Items 052-053 (Flat River, 1908)	Fiche
Elvins	St. Francois	1915	1897	Item 053-056 (Flat River, 1915)	Fiche
Elvins	St. Francois	1927	1897	Items 043-044	Fiche
Essex	Stoddard	1920	1897	Item 045	Fiche
Esther	St. Francois	1908	1897	Items 052-053 (Flat River, 1908)	Fiche
Esther	St. Francois	1915	1897	Item 053-056 (Flat River, 1915)	Fiche
Esther	St. Francois	1927	1897	Items 056-059 (Flat River, 1927)	Fiche
Farmington	St. Francois	1894	1897	Item 046	Fiche
Farmington	St. Francois	1900	1897	Item 046	Fiche
Farmington	St. Francois	1908	1897	Items 046-047	Fiche
Farmington	St. Francois	1914	1897	Items 047-048	Fiche
Farmington	St. Francois	1927	1897	Items 048-049	Fiche
Farmington	St. Francois	1952	1671	MO-1 (1-11)	Film
Fenton	St. Louis	1976	1738	MO-13 (St. Louis 1976, Vol. 21/22)	Film
Ferguson	St. Louis	1978	1624	MO-12 (St. Louis 1978, Vol. 18)	Film
Ferguson	St. Louis	1980	1624	MO-12 (St. Louis 1978, Vol. 18)	Film
Fisk	Butler	1924	1897	Item 050	Fiche
Flat River	St. Francois	1908	1897	Items 051-053	Fiche
Flat River	St. Francois	1915	1897	Items 053-056	Fiche
Flat River	St. Francois	1927	1897	Items 056-059	Fiche
Fredericktown	Madison	1886	1897	Item 060	Fiche
Fredericktown	Madison	1893	1897	Item 060	Fiche
Fredericktown	Madison	1900	1897	Items 060-061	Fiche
Fredericktown	Madison	1908	1897	Items 061-062	Fiche
Fredericktown	Madison	1914	1897	Items 062-063	Fiche
Fredericktown	Madison	1927	1897	Items 063-064	Fiche
Flordell Hills	St. Louis	1978	1624	MO-12 (St. Louis 1978, Vol. 18)	Film
Flordell Hills	St. Louis	1980	1624	MO-12 (St. Louis 1980, Vol. 18)	Film
Florissant	St. Louis	1978	1624	MO-12 (St. Louis 1978, Vol. 18)	Film
Florissant	St. Louis	1980	1624	MO-12 (St. Louis 1980, Vol. 18)	Film
Fulton	Callaway	1947	1671	MO-1 (1-13)	Film
Glendale	St. Louis	1968	1671	MO-3 (Kirkwood, 1968)	Film
Glendale	St. Louis	1978	1624	MO-11 (St. Louis 1978, Vol. 14)	Film
Glen Echo Park	St. Louis	1967	1624	MO-12 (St. Louis 1967, Vol. 19)	Film
Glen Echo Park	St. Louis	1978	1624	MO-12 (St. Louis 1978, Vol. 16)	Film
Glen Echo Park	St. Louis	1980	1624	MO-12 (St. Louis 1980, Vol. 16)	Film
Goodfellow Terrace	St. Louis	1978	1624	MO-12 (St. Louis 1978, Vol. 16)	Film
Goodfellow Terrace	St. Louis	1980	1624	MO-12 (St. Louis, 1980)	Film
Goodfellow Terrace	St. Louis	1984	1624	MO-12 (St. Louis 1984, Vol. 16S)	Film
Goodfellow Terrace	St. Louis	1990	1624	MO-12 (St. Louis 1990, Vol. 16S)	Film
Goodfellow Terrace	St. Louis	1992	1624	MO-12 (St. Louis 1992, Vol. 16S)	Film
Gravois Twp.	St. Louis	1976	1738	MO-13 (St. Louis 1976, Vol. 21/22)	Film
Gravois Twp.	St. Louis	1984	1738	MO-13 (St. Louis 1984, Vol. 21S/22)	Film
Gravois Twp.	St. Louis	1990	1738	MO-13 (St. Louis 1990, Vol. 21S/22)	Film
Gravois Twp.	St. Louis	1992	1738	MO-13 (St. Louis 1992, Vol. 21S/22)	Film
Greendale	St. Louis	1967	1624	MO-12 (St. Louis 1967, Vol. 19)	Film

<b>Series I</b>	<b>Missouri</b>				
<b>City/Township</b>	<b>County</b>	<b>Date</b>	<b>Box #</b>	<b>Item/Reel Number</b>	<b>Format</b>
Greendale	St. Louis	1978	1624	MO-12 (St. Louis 1978, Vol. 16)	Film
Greendale	St. Louis	1980	1624	MO-12 (St. Louis 1980, Vol. 16)	Film
Gumbo	St. Francois	1927	1897	Items 037-038 (Desloge, 1927)	Fiche
Hanley Hills	St. Louis	1978	1624	MO-11 (St. Louis 1978, Vol. 13)	Film
Hanley Hills	St. Louis	1978	1624	MO-11 (St. Louis 1978, Vol. 13A)	Film
Hannibal	Marion	1970	1671	MO-1 (1-40)	Film
Harrisonville	Cass	1949	1671	MO-1 (1-8)	Film
Harviell	Butler	1924	1897	Item 066	Fiche
Hayti	Pemiscot	1927	1897	Item 067	Fiche
Hayti	Pemiscot	1951	1897	Item 067	Fiche
Hazelwood	St. Louis	1978	1624	MO-12 (St. Louis 1970, Vol. 18)	Film
Hazelwood	St. Louis	1980	1624	MO-12 (St. Louis 1980, Vol. 18)	Film
Hillsdale	St. Louis	1978	1624	MO-12 (St. Louis 1978, Vol. 16)	Film
Hillsdale	St. Louis	1980	1624	MO-12 (St. Louis 1980, Vol. 16)	Film
Hillsdale	St. Louis	1984	1624	MO-12 (St. Louis 1984, Vol. 16S)	Film
Hillsdale	St. Louis	1990	1624	MO-12 (St. Louis 1990, Vol. 16S)	Film
Hillsdale	St. Louis	1992	1624	MO-12 (St. Louis 1992, Vol. 16S)	Film
Independence	Jackson	1964	1671	MO-1 (1-37)	Film
Ironton-Pilot Knob	Iron	1886	1897	Item 068	Fiche
Ironton-Pilot Knob	Iron	1893	1897	Item 068	Fiche
Ironton-Pilot Knob	Iron	1900	1897	Items 068-069	Fiche
Ironton-Pilot Knob	Iron	1908	1897	Item 069	Fiche
Ironton-Pilot Knob	Iron	1914	1897	Items 069-070	Fiche
Ironton-Pilot Knob	Iron	1927	1897	Items 070-071	Fiche
Ironton-Pilot Knob	Iron	1951	1897	Item 071	Fiche
Jackson	Cape Girardeau	1895	1897	Item 072	Fiche
Jackson	Cape Girardeau	1896	WMC 002	Folder 002	Copy
Jackson	Cape Girardeau	1901	1897	Item 072	Fiche
Jackson	Cape Girardeau	1901	WMC 002	Folder 002	Copy
Jackson	Cape Girardeau	1908	1897	Items 072-073	Fiche
Jackson	Cape Girardeau	1908	WMC 002	Folder 002	Copy
Jackson	Cape Girardeau	1921	1897	Items 073-074	Fiche
Jackson	Cape Girardeau	1921	WMC 002	Folder 001	Copy
Jackson	Cape Girardeau	1931	1897	Items 074-075	Fiche
Jackson	Cape Girardeau	1931	WMC 002	Folder 001	Copy
Jackson	Cape Girardeau	1952	1671	MO-1 (1-8)	Film
Jefferson City	Cole	1962	1671	MO-1 (1-36)	Film
Jennings	St. Louis	1978	1624	MO-12 (St. Louis 1978, Vol. 16)	Film
Jennings	St. Louis	1978	1624	MO-12 (St. Louis 1978, Vol. 18)	Film
Jennings	St. Louis	1980	1624	MO-12 (St. Louis 1980, Vol. 16)	Film
Jennings	St. Louis	1980	1624	MO-12 (St. Louis 1980, Vol. 18)	Film
Jennings	St. Louis	1982	1624	MO-12 (St. Louis 1982, Vol. 17)	Film
Jennings	St. Louis	1984	1624	MO-12 (St. Louis 1984, Vol. 18S)	Film
Jennings	St. Louis	1990	1624	MO-12 (St. Louis 1990, Vol. 17S)	Film
Jennings	St. Louis	1990	1624	MO-12 (St. Louis 1990, Vol. 18)	Film
Jennings	St. Louis	1992	1624	MO-12 (St. Louis 1992, Vol. 17S)	Film
Jennings	St. Louis	1992	1624	MO-12 St. Louis 1992, Vol. 18)	Film
Joplin	Jasper	1963	1671	MO-1 (1-97)	Film
Joplin	Jasper	1967	1671	MO-1 (1-97)	Film

<b>Series I</b>	<b>Missouri</b>				
<b>City/Township</b>	<b>County</b>	<b>Date</b>	<b>Box #</b>	<b>Item/Reel Number</b>	<b>Format</b>
Kansas City	Jackson	1963	1671	MO-2-3 (Vol. 1A-11)	Film
Kansas City	Jackson	1969	1671	MO-2 (Vol. 1, 1-86)	Film
Kansas City, North	Jackson	1964	1671	MO-1 (Independence 1964, Partial Map of Kansas City only)	Film
Kennett	Dunklin	1911	1897	Item 076	Fiche
Kennett	Dunklin	1919	1897	Item 076	Fiche
Kennett	Dunklin	1928	1897	Items 076-078	Fiche
Kennett	Dunklin	1954	1671	MO-3 (1-15)	Film
Kirksville	Adair	1947	1671	MO-3 (1-12)	Film
Kirkwood	St. Louis	1968	1671	MO-3 (1-28)	Film
Ladue City	St. Louis	1978	1671	MO-11 (St. Louis, 1978 Vol. 13)	Film
Lakeshire	St. Louis	1976	1738	MO-13 (St, Louis 1976, Vol. 21/22)	Film
Leadington	St. Francois	1927	1897	Items 056-059 (Flat River, 1927)	Fiche
Leadville	St. Francois	1908	1897	Item 036 (Desloge, 1908)	Fiche
Leadville	St. Francois	1915	1897	Item 036 (Desloge, 1915)	Fiche
Leadville	St. Francois	1927	1897	Items 037-038 (Desloge, 1927)	Fiche
Leadwood (Sic. Leawood)	St. Francois	1908	1897	Item 079	Fiche
Leadwood (Sic. Leawood)	St. Francois	1914	1897	Item 079	Fiche
Leadwood (Sic. Leawood)	St. Francois	1927	1897	Item 080	Fiche
Lemay Twp.	St. Louis	1976	1738	MO-13 (St. Louis 1976, Vol. 21/22)	Film
Lemay Twp.	St. Louis	1984	1738	MO-13 (St. Louis 1984, Vol. 21S/22)	Film
Lemay Twp.	St. Louis	1990	1738	MO-13 (St. Louis 1990, Vol. 21S/22)	Film
Lemay Twp.	St. Louis	1992	1738	MO-13 (St. Louis 1992, Vol. 21S/22)	Film
Liberty	Clay	1951	1671	MO-3 (1-10)	Film
Lilbourn	New Madrid	1913	1897	Item 081	Fiche
Lilbourn	New Madrid	1928	1897	Item 081	Fiche
Louisiana	Pike	1950	1671	MO-3 (1-10)	Film
Lucas and Hunt Village	St. Louis	1978	1624	MO-12 (St. Louis 1978, Vol. 18)	Film
Lucas and Hunt Village	St. Louis	1980	1624	MO-12 (St. Louis 1980, Vol. 18)	Film
Mackenzie	St. Louis	1976	1738	MO-13 (St. Louis 1976, Vol. 21/22)	Film
Mackenzie	St. Louis	1984	1738	MO-13 (St. Louis 1984, Vol. 21S/22)	Film
Mackenzie	St. Louis	1990	1738	MO-13 (St. Louis 1990, Vol. 21S/22)	Film
Mackenzie	St. Louis	1992	1738	MO-13 (St. Louis 1992, Vol. 15S)	Film
Macon	Macon	1950	1671	MO-3 (1-12)	Film
Malden	Dunklin	1895	1897	Item 082	Fiche
Malden	Dunklin	1900	1897	Item 082	Fiche
Malden	Dunklin	1906	1897	Items 082-083	Fiche
Malden	Dunklin	1911	1897	Item 083	Fiche
Malden	Dunklin	1923	1897	Items 083-084	Fiche
Malden	Dunklin	1950	1671	MO-3 (1-9)	Film
Maplewood	St. Louis	1978	1624	MO-11 (St. Louis 1978, Vol. 15)	Film
Maplewood	St. Louis	1980	1624	MO-11 (St. Louis 1980, Vol. 15)	Film
Maplewood	St. Louis	1984	1624	MO-11 (St. Louis 1984, Vol. 15S)	Film
Maplewood	St. Louis	1990	1624	MO-11 (St. Louis 1990, Vol. 15S)	Film

<b>Series I</b>	<b>Missouri</b>					
<b>City/Township</b>	<b>County</b>	<b>Date</b>	<b>Box #</b>	<b>Item/Reel Number</b>	<b>Format</b>	
Maplewood	St. Louis	1992	1624	MO-11 (St. Louis 1992, Vol. 15S)	Film	
Marceline	Linn	1950	1671	MO-3 (1-12)	Film	
Margona Village	St. Louis	1967	1624	MO-12 (St. Louis 1967, Vol. 19)	Film	
Margona Village	St. Louis	1978	1624	MO-12 (St. Louis 1978, Vol. 16)	Film	
Margona Village	St. Louis	1980	1624	MO-12 (St. Louis 1980, Vol. 16)	Film	
Marlborough	St. Louis	1976	1738	MO-13 (St. Louis 1976, Vol. 21/22)	Film	
Mary Ridge	St. Louis	1967	1624	MO-12 (St. Louis 1967, Vol. 19)	Film	
Mary Ridge	St. Louis	1978	1624	MO-11 (St. Louis 1978, Vol. 13A)	Film	
Mary Ridge	St. Louis	1978	1624	MO-12 (St. Louis 1978, Vol. 16)	Film	
Mary Ridge	St. Louis	1980	1624	MO-12 (St. Louis 1980, Vol. 16)	Film	
Maryville	Nodaway	1951	1671	MO-3 (1-10)	Film	
Mexico	Audrain	1960	1671	MO-3 (1-15)	Film	
Midland Heights	St. Louis	1978	1624	MO-11 (St. Louis 1978, Vol. 13A)	Film	
Mine La Motte	Madison	1927	1897	Items 063-065 (Fredericktown, 1927)	Fiche	
Monett	Barry	1954	1671	MO-3 (1-10)	Film	
Morehouse	New Madrid	1911	1897	Item 085	Fiche	
Morehouse	New Madrid	1919	1897	Item 085	Fiche	
Neelyville	Butler	1895	1897	Item 086	Fiche	
Neelyville	Butler	1917	1897	Items 101-103 (Poplar Bluff, 1917)	Fiche	
Neelyville	Butler	1924	1897	Item 086	Fiche	
Neosho	Newton	1960	1671	MO-3 (1-12)	Film	
New Madrid	New Madrid	1894	1897	Item 087	Fiche	
New Madrid	New Madrid	1900	1897	Item 087	Fiche	
New Madrid	New Madrid	1906	1897	Item 087	Fiche	
New Madrid	New Madrid	1911	1897	Items 087-088	Fiche	
New Madrid	New Madrid	1919	1897	Item 088	Fiche	
New Madrid	New Madrid	1950	1897	Items 088-089	Fiche	
New Madrid Twp.	New Madrid	1950	1897	Items 088-089 (New Madrid, 1950)	Fiche	
Newtown	St. Francois	1927	1897	Items 056-059 (Flat River, 1927)	Fiche	
Normandy	St. Louis	1967	1624	MO-12 (St. Louis 1967, Vol. 19)	Film	
Normandy Twp.	St. Louis	1967	1624	MO-12 (St. Louis 1967, Vol. 19)	Film	
Normandy Twp.	St. Louis	1978	1624	MO-11 (St. Louis 1978, Vol. 13)	Film	
Normandy Twp.	St. Louis	1978	1624	MO-11 (St. Louis 1978, Vol. 13A)	Film	
Normandy Twp.	St. Louis	1978	1624	MO-12 (St. Louis 1978, Vol. 16)	Film	
Normandy Twp.	St. Louis	1978	1624	MO-12 (St. Louis 1978, Vol. 18)	Film	
Normandy Twp.	St. Louis	1980	1624	MO-12 (St. Louis 1980, Vol. 16)	Film	
Normandy Twp.	St. Louis	1980	1624	MO-12 (St. Louis 1980, Vol. 18)	Film	
North Kansas City	Clay	1964	1671	MO-3 (1-27)	Film	
Northwoods	St. Louis	1978	1624	MO-12 (St. Louis 1978, Vol. 16)	Film	
Northwoods	St. Louis	1980	1624	MO-12 (St. Louis 1980, Vol. 16)	Film	
Oakland	St. Louis	1968	1671	MO-3 (Kirkwood, 1968)	Film	
Odessa	Lafayette	1951	1671	MO-3 (1-5)	Film	
Olivette	St. Louis	1978	1624	MO-11 (St. Louis 1978, Vol. 13A)	Film	
Oran	Scott	1919	1897	Item 090	Fiche	
Oronogo	Jasper	1954	1738	MO-13 (Webb City 1954)	Film	
Overland	St. Louis	1978	1624	MO-11 (St. Louis 1978, Vol. 13A)	Film	
Pagedale	St. Louis	1967	1624	MO-12 (St. Louis 1967, Vol. 19)	Film	
Pagedale	St. Louis	1978	1624	MO-11 (St. Louis 1978, Vol. 13)	Film	
Pagedale	St. Louis	1978	1624	MO-12 (St. Louis 1978, Vol. 16)	Film	



<b>Series I</b>	<b>Missouri</b>				
<b>City/Township</b>	<b>County</b>	<b>Date</b>	<b>Box #</b>	<b>Item/Reel Number</b>	<b>Format</b>
Pagedale	St. Louis	1980	1624	MO-12 (St. Louis 1980, Vol. 16)	Film
Pasadena Hills	St. Louis	1967	1624	MO-12 (St. Louis 1967, Vol. 19)	Film
Pasadena Hills	St. Louis	1978	1624	MO-12 (St. Louis 1978, Vol. 16)	Film
Pasadena Hills	St. Louis	1980	1624	MO-12 (St. Louis 1980, Vol. 16)	Film
Pasadena Park	St. Louis	1967	1624	MO-12 (St. Louis 1967, Vol. 19)	Film
Pasadena Park	St. Louis	1978	1624	MO-12 (St. Louis 1978, Vol. 16)	Film
Pasadena Park	St. Louis	1980	1624	MO-12 (St. Louis 1980, Vol. 16)	Film
Pattonville	St. Louis	1978	1624	MO-12 (St. Louis 1978, Vol. 13A)	Film
Perryville	Perry	1911	1897	Item 091	Fiche
Perryville	Perry	1928	1897	Item 091	Fiche
Perryville	Perry	1938	1897	Items 091-092	Fiche
Perryville	Perry	1947	1671	MO-3 (1-6)	Film
Piedmont	Wayne	1920	1897	Item 093	Fiche
Piedmont	Wayne	1929	1897	Item 093	Fiche
Pilot Knob (see Ironton)	Iron	1886	1897	Item 068 (Ironton, 1886)	Fiche
Pilot Knob (see Ironton)	Iron	1893	1897	Item 068 (Ironton, 1893)	Fiche
Pilot Knob (see Ironton)	Iron	1900	1897	Items 068-069 (Ironton, 1900)	Fiche
Pilot Knob (see Ironton)	Iron	1908	1897	Item 069 (Ironton, 1908)	Fiche
Pilot Knob (see Ironton)	Iron	1914	1897	Items 069-070 (Ironton, 1914)	Fiche
Pilot Knob (see Ironton)	Iron	1927	1897	Items 070-071 (Ironton, 1927)	Fiche
Pilot Knob (see Ironton)	Iron	1951	1897	Item 071 (Ironton, 1951)	Fiche
Pine Lawn	St. Louis	1978	1624	MO-12 (St. Louis 1978, Vol. 16)	Film
Pine Lawn	St. Louis	1980	1624	MO-12 (St. Louis 1980, Vol. 16)	Film
Pine Lawn	St. Louis	1984	1624	MO-12 (St. Louis 1984, Vol. 16S)	Film
Pine Lawn	St. Louis	1990	1624	MO-12 (St. Louis 1990, Vol. 16S)	Film
Pine Lawn	St. Louis	1992	1624	MO-12 (St. Louis 1992, Vol. 16S)	Film
Poplar Bluff	Butler	1892	1897	Item 094	Fiche
Poplar Bluff	Butler	1895	1897	Items 094-095	Fiche
Poplar Bluff	Butler	1901	1897	Items 095-096	Fiche
Poplar Bluff	Butler	1910	1897	Items 097-098	Fiche
Poplar Bluff	Butler	1917	1897	Items 098-100	Fiche
Poplar Bluff	Butler	1924	1897	Items 011-102	Fiche
Poplar Bluff	Butler	1928	1897	Items 102-105	Fiche
Poplar Bluff	Butler	1954	1671	MO-3 (1-31)	Film
Portageville	New Madrid	1911	1897	Item 106	Fiche
Portageville	New Madrid	1919	1897	Item 106	Fiche
Portageville	New Madrid	1927	1897	Item 106	Fiche
Potosi	Washington	1886	1897	Item 107	Fiche
Potosi	Washington	1893	1897	Item 107	Fiche
Potosi	Washington	1900	1897	Item 107	Fiche
Potosi	Washington	1908	1897	Item 107	Fiche
Potosi	Washington	1929	1897	Items 107-108	Fiche

<b>Series I</b>	<b>Missouri</b>					
<b>City/Township</b>	<b>County</b>	<b>Date</b>	<b>Box #</b>	<b>Item/Reel</b>	<b>Number</b>	<b>Format</b>
Richmond Heights	St. Louis	1978	1624	MO-11 (St. Louis 1978, Vol. 15)		Film
Richmond Heights	St. Louis	1980	1624	MO-11 (St. Louis 1980, Vol. 15)		Film
Richmond Heights	St. Louis	1984	1624	MO-11 (St. Louis 1984, Vol. 15S)		Film
Richmond Heights	St. Louis	1990	1624	MO-11 (St. Louis 1990, Vol. 15S)		Film
Richmond Heights	St. Louis	1992	1624	MO-11 (St. Louis 1992, Vol. 17S)		Film
Riverview	St. Louis	1980	1624	MO-12 (St. Louis 1982, Vol. 17)		Film
Riverview	St. Louis	1990	1624	MO-12 (St. Louis 1990, Vol. 17S)		Film
Riverview	St. Louis	1992	1624	MO-12 (St. Louis 1992, Vol. 17S)		Film
Rock Hill	St. Louis	1978	1624	MO-11 (St. Louis 1978, Vol. 14)		Film
Rock Hill	St. Louis	1978	1624	MO-11 (St. Louis 1978, Vol. 15)		Film
Rock Hill	St. Louis	1980	1624	MO-11 (St. Louis 1980, Vol. 15)		Film
Rolla	Phelps	1884	1897	Item 109		Fiche
Rolla	Phelps	1893	1897	Item 109		Fiche
Rolla	Phelps	1897	1897	Item 109		Fiche
Rolla	Phelps	1905	1897	Items 109-110		Fiche
Rolla	Phelps	1910	1897	Item 110		Fiche
Rolla	Phelps	1917	1897	Item 110-111		Fiche
Rolla	Phelps	1924	1897	Item 111-112		Fiche
Rolla	Phelps	1933	1897	Item 112-113		Fiche
St. Ann	St. Louis	1967	1624	MO-12 (St. Louis 1967, Vol. 19)		Film
St. Ann	St. Louis	1978	1624	MO-11 (St. Louis 1978, Vol. 13A)		Film
St. Ann	St. Louis	1978	1624	MO-12 (St. Louis 1978, Vol. 16)		Film
St. Ann	St. Louis	1980	1624	MO-12 (St. Louis 1980, Vol. 16)		Film
St. Charles	St. Charles	1953	1671	MO-3 (1-25)		Film
St. Ferdinand Twp.	St. Louis	1967	1624	MO-12 (St. Louis 1967, Vol. 19)		Film
St. Ferdinand Twp.	St. Louis	1978	1624	MO-11 (St. Louis 1978, Vol. 13A)		Film
St. Ferdinand Twp.	St. Louis	1978	1624	MO-12 (St. Louis 1978, Vol. 16)		Film
St. Ferdinand Twp.	St. Louis	1978	1624	MO-12 (St. Louis 1978, Vol. 18)		Film
St. Ferdinand Twp.	St. Louis	1980	1624	MO-12 (St. Louis 1980, Vol. 16)		Film
St. Ferdinand Twp.	St. Louis	1980	1624	MO-12 (St. Louis 1980, Vol. 18)		Film
St. Ferdinand Twp.	St. Louis	1982	1624	MO-12 (St. Louis 1982, Vol. 17)		Film
St. Ferdinand Twp.	St. Louis	1990	1624	MO-12 (St. Louis 1990, Vol. 17S)		Film
St. Ferdinand Twp.	St. Louis	1992	1624	MO-12 (St. Louis 1992, Vol. 17S)		Film
Ste. Genevieve	Ste. Genevieve	1894	1897	Item 114		Fiche
Ste. Genevieve	Ste. Genevieve	1901	1897	Item 114		Fiche
Ste. Genevieve	Ste. Genevieve	1911	1897	Item 115		Fiche
Ste. Genevieve	Ste. Genevieve	1929	1897	Items 115-116		Fiche
St. George	St. Louis	1976	1738	MO-13 (St. Louis 1976, Vol. 21/22)		Film
St. John	St. Louis	1967	1624	MO-12 (St. Louis 1967, Vol. 19)		Film
St. John	St. Louis	1978	1624	MO-11 (St. Louis 1978, Vol. 13A)		Film
St. John	St. Louis	1978	1624	MO-12 (St. Louis 1978, Vol. 16)		Film
St. John	St. Louis	1980	1624	MO-12 (St. Louis 1980, Vol. 16)		Film
St. Joseph	Buchanan	1963	1671	MO-4 (Vo. 2: 151-217, Vol. 3/4: 314-353, 479-499)		Film
St. Joseph	Buchanan	1965	1671	MO-4 (Vol. 1: 1-84)		Film
St. Joseph	Buchanan	1966	1671	MO-4 (Vol. 2-4: 151-217, 314-353, 479-499)		Film
St. Joseph	Buchanan	1969	1671	MO-4 (Vol. 1: 1-84)		Film

<b>Series I City/Township</b>	<b>Missouri County</b>	<b>Date</b>	<b>Box #</b>	<b>Item/Reel Number</b>	<b>Format</b>
St. Louis	S. Louis	1967	1624	MO-12 (Vol. 19: 1901-1904, 1906-1931)	Film
St. Louis	St. Louis	1976	1738	MO-13 (Vol. 21/22: 2101-2120, 2122, 2123, 2201-2230, 2233, 2234, 2236, 2237)	Film
St. Louis	St. Louis	1978	1624	MO-11 (Vol. 13: 1-60, 61a-d, 62-65, 65a-j, 91-115, Vol. 13A: 66-89, 92, 93, 104-129, Vol. 14: 1-93, Vol. 15: 1-70, 81-86, 88-107 (#88 and #89 missing),	Film
St. Louis	St. Louis	1980	1624	MO-12 (Vol. 16: 1601-1665, Vol. 18: 1801-1826, 1841, 1844-1850, 1856-1862) MO-11 (Vol. 15: 1-70, 81-86, 88-107)	Film
St. Louis	St. Louis	1982	1624	MO-12 (Vol. 16: 1601-1665, Vol. 18: 1801-1826, 1841, 1844-1850, 1856-1862) MO-12 (Vol. 17: 1701-1737, 1739-1753, 1755, 1757-1763)	Film
St. Louis	St. Louis	1984	1624; 1738	MO-11 (Vol. 13S: 36, 39, 42, 44, 46, Vol. 15S: 6, 14, 22, 26, 28, 43, 44, 48, 53, 54, 67-70, 81) MO-12 (Vol. 16S: 1605, 1608, 1615-1622, 1653, 1654, 1656, 1657, 1659. Vol. 18S: 1801-1806, 1816-1820 [#1817-1819 missing])	Film
St. Louis	St. Louis	1990	1671; 1624	MO-13 (Vol. 21S/22: 2106, 2110, 2111, 2122, 2123, 2202, 2204, 2212, 2216, 2218, 2237 [2237 missing]) MO-5 (Vol. 1W: 1-54, 57-80. Vol. 1E: 1-33, 37-45, 49-53, 57-61, 65, 66, 68-89. Vol. 2: 1-36, 41-13, 48-51, 53-79) MO-6 (Vol. 3: 1-122. Vol. 4: 1-6, 8-111. Vol. 5N: 1-62) MO-7 (Vol. 5S: 63-135. Vol. 6: 1-104 [#83 missing]) MO-8 (Vol. 7: 1-125. Vol. 8: 1-87 [#11 missing]) MO-9 (Vol. 9: 1-48, 50-118. Vol. 10: 1-106)	Film

<b>Series I</b>	<b>Missouri</b>	<b>Date</b>	<b>Box #</b>	<b>Item/Reel Number</b>	<b>Format</b>
<b>City/Township</b>	<b>County</b>				
St. Louis	St. Louis	1990	1624; 1738	MO-10 (Vol. 11: 1-44, 46-96. Vol. 12: Film 1-76)	
				MO-11 (Vol. 13S: 36, 39, 42, 44, 46. Vol. 15S: 6, 14,22, 26, 28, 43, 44, 48, 53, 54, 67-70, 81)	
				MO-12 (Vol. 16S: 1605, 1608, 1615-1622, 1653, 1654, 1656, 1657, 1659. Vol. 17S: 1701-1737, 1739-1753, 1755, 1757-1763 [#1745 missing]. Vol. 18S: 1801-1806, 1816-1820)	
				MO-13 (Vol. 20: 2001-2058. Vol. 21S/22: 2106, 2110, 2111, 2122, 2123, 2202, 2204, 2212, 2216, 2218, 2237.)	
St. Louis	St. Louis	1992	1671; 1624	MO-5 (Vol. 1W: 1-54, 57-80. Vol. 1E: Film 1-33, 37-45, 49-53, 57-61, 65, 66, 68-89. Vol. 2: 1-36, 41-13, 48-51, 53-79)	
				MO-6 (Vol. 3: 1-122. Vol. 4: 1-6, 8-111. Vol. 5N: 1-62)	
				MO-7 (Vol. 5S: 63-135. Vol. 6: 1-104)	
				MO-8 (Vol. 7: 1-125. Vol. 8: 1-87)	
				MO-9 (Vol. 9: 1-48, 50-118. Vol. 10: 1-106)	
				MO-10 (Vol. 11: 1-44, 46-96. Vol. 12: 1-76)	
				MO-11 (Vol. 13S: 36, 39, 42, 44, 46. Vol. 15S: 6, 14,22, 26, 28, 43, 44, 48, 53, 54, 67-70, 81)	
				MO-12 (Vol. 16S: 1605, 1608, 1615-1622, 1653, 1654, 1656, 1657, 1659. Vol. 17S: 1701-1737, 1739-1753, 1755, 1757-1763 [#1745 missing]. Vol. 18S: 1801-1806, 1816-1820)	

<b>Series I</b>	<b>Missouri</b>	<b>Date</b>	<b>Box #</b>	<b>Item/Reel Number</b>	<b>Format</b>
<b>City/Township</b>	<b>County</b>				
St. Louis	St. Louis	1992	1738	MO-13 (Vol. 20: 2001-2058. Vol. 21S/22: 2106, 2110, 2111, 2122, 2123, 2202, 2204, 2212, 2216, 2218, 2237.)	Film
St. Louis Airport Twp.	St. Louis	1978	1624	MO-12 (St. Louis 1978, Vol. 18)	Film
St. Louis Airport Twp.	St. Louis	1980	1624	MO-12 (St. Louis 1980, Vol. 18)	Film
St. Marys	Ste. Genevieve	1915	1897	Item 117	Fiche
St. Peters	St. Charles	1917	1897	Item 118	Fiche
Salem	Dent	1886	1897	Item 119	Fiche
Salem	Dent	1893	1897	Item 119	Fiche
Salem	Dent	1900	1897	Item 119	Fiche
Salem	Dent	1910	1897	Items 119-120	Fiche
Salem	Dent	1916	1897	Item 120	Fiche
Salem	Dent	1924	1897	Items 120-121	Fiche
Salem	Dent	1932	1897	Item 121	Fiche
Sedalia	Pettis	1963	1738	MO-13 (2-37 [No indication that there ever was a #1])	Film
Shrewsbury	St. Louis	1978	1624	MO-11 (St. Louis 1978, Vol. 15)	Film
Shrewsbury	St. Louis	1980	1624	MO-11 (St. Louis 1980, Vol. 15)	Film
Sikeston	Scott	1885	1897	Item 122	Fiche
Sikeston	Scott	1901	1897	Item 122	Fiche
Sikeston	Scott	1910	1897	Items 122-123	Fiche
Sikeston	Scott	1919	1897	Item 123	Fiche
Sikeston	Scott	1927	1897	Items 124-125	Fiche
Sikeston	Scott and New Madrid	1953	1738	MO-13 (2-16 [No indication that there ever was a #1])	Film
Sikeston	Scott and New Madrid	1953	WMC 2	Folder 003	Paper
Southwest City	McDonald	1933	1768	MO-13 (1-2)	Film
Spoonerville	Dunklin	1923	1897	Items 083-084 (Malden, 1923)	Fiche
Spoonerville	Dunklin	1950	1671	MO-3 (Malden, 1950)	Film
Springfield	Greene	1963	1738	MO-13 (Vol. 1: 1-67. Vol. 2: 201-248)	Film
Springfield	Greene	1969	1738	MO-13 (Vol. 1: 1-67)	Film
Steele	Pemiscot	1920	1897	Item 126	Fiche
Steele	Pemiscot	1927	1897	Items 126-127	Fiche
Steelville	Crawford	1924	1897	Item 128	Fiche
Steelville	Crawford	1939	1897	Item 128	Fiche
Sullivan	Franklin	1947	1738	MO-13 (1-5)	Film
Sycamore Hills	St. Louis	1978	1624	MO-11 (St. Louis 1978, Vol. 13A)	Film
Tarkio	Atchison	1941	1738	MO-13 (1-7)	Film
Taylor Place	St. Francois	1908	1897	Items 051-053 (Flat River, 1908)	Fiche
Taylor Place	St. Francois	1915	1897	Items 053-056 (Flat River, 1915)	Fiche
Taylor town	St. Francois	1927	1897	Items 056-059 (Flat River, 1927)	Fiche
Thayer	Oregon	1894	1897	Item 129	Fiche
Thayer	Oregon	1900	1897	Item 129	Fiche
Thayer	Oregon	1906	1897	Item 129	Fiche
Thayer	Oregon	1925	1897	Items 129-130	Fiche

<b>Series I</b>		<b>Missouri</b>				
<b>City/Township</b>	<b>County</b>	<b>Date</b>	<b>Box #</b>	<b>Item/Reel Number</b>	<b>Format</b>	
Unionville	Putnam	1950	1897	MO-13 (1-6)	Film	
University City	St. Louis	1978	1624	MO-11 (St. Louis 1978, Vol. 13)	Film	
University City	St. Louis	1990	1624	MO-7 (St. Louis 1990, Vol. 6)	Film	
University City	St. Louis	1992	1624	MO-7 (St. Louis 1992, Vol. 6)	Film	
Uplands Park	St. Louis	1978	1624	MO-12 (St. Louis 1978, Vol. 16)	Film	
Uplands Park	St. Louis	1980	1624	MO-12 (St. Louis 1980, Vol. 16)	Film	
Velda	St. Louis	1978	1624	MO-12 (St. Louis 1978, Vol. 16)	Film	
Velda	St. Louis	1980	1624	MO-12 (St. Louis 1980, Vol. 16)	Film	
Velda Village Hills	St. Louis	1978	1624	MO-12 (St. Louis 1978, Vol. 16)	Film	
Velda Village Hills	St. Louis	1980	1624	MO-12 (St. Louis 1980, Vol. 16)	Film	
Vinita Park	St. Louis	1978	1624	MO-11 (St. Louis 1978, Vol. 13)	Film	
Vinita Park	St. Louis	1978	1624	MO-11 (St. Louis 1978, Vol. 13A)	Film	
Vinita Terrace	St. Louis	1978	1624	MO-11 (St. Louis 1978, Vol. 13)	Film	
Vinita Terrace	St. Louis	1978	1624	MO-11 (St. Louis 1978, Vol. 13A)	Film	
Warrensburg	Johnson	1952	1736	MO-13 (1-14)	Film	
Washington Twp.	Buchanan	1963	1671	MO-4 (St. Joseph 1963, Vol. 3-4)	Film	
Washington Twp.	Buchanan	1966	1671	MO-4 (St. Joseph 1966, Vol. 3-4)	Film	
Webb City	Jasper	1954	1738	MO-13 (1-20)	Film	
Webster Grove	St. Louis	1976	1738	MO-13 (St. Louis 1976, Vol. 21-22)	Film	
Webster Grove	St. Louis	1978	1624	MO-11 (St. Louis 1978, Vol. 14)	Film	
Wellston	St. Louis	1967	1624	MO-12 (St. Louis 1967, Vol. 19)	Film	
Wellston	St. Louis	1978	1624	MO-12 (St. Louis 1978, Vol. 16)	Film	
Wellston	St. Louis	1980	1624	MO-12 (St. Louis 1980, Vol. 16)	Film	
Wellston	St. Louis	1984	1624	MO-12 (St. Louis 1984, Vol. 16S)	Film	
Wellston	St. Louis	1990	1624	MO-7 (St. Louis 1990, Vol. 6)	Film	
Wellston	St. Louis	1990	1624	MO-12 (St. Louis 1990, Vol. 16S)	Film	
Wellston	St. Louis	1992	1624	MO-7 (St. Louis 1992, Vol. 6)	Film	
Wellston	St. Louis	1992	1624	MO-12 (St. Louis 1992, Vol. 16S)	Film	
Wilbur Park	St. Louis	1976	1738	MO-13 (St. Louis 1976, Vol. 21-22)	Film	
Woodson Terrace	St. Louis	1978	1624	MO-12 (St. Louis 1978, Vol. 16)	Film	
Woodson Terrace	St. Louis	1980	1624	MO-12 (St. Louis 1980, Vol. 16)	Film	
Oil City, Pa (Accidentally included with Missouri maps)	Venango	1913	1671	MO-1 (1)	Film	

<b>Series II</b>		<b>Arkansas</b>				
<b>City/Township</b>	<b>County</b>	<b>Date</b>	<b>Box #</b>	<b>Item/Reel Number</b>	<b>Format</b>	
Arkadelphia	Clark	1960	1936	AR-1	Film	
Ashdown	Little River	1946	1936	AR-1	Film	
Augusta	Woodruff	1950	1936	AR-1	Film	
Batesville	Independence	1960	1936	AR-1	Film	
Bentonville	Benton	1949	1936	AR-1	Film	
Blytheville	Mississippi	1957	1936	AR-1	Film	
Booneville	Logan	1948	1936	AR-1	Film	
Brinkley	Monroe	1947	1936	AR-1	Film	
Camden	Ouachita	1962	1936	AR-1	Film	
Camden	Ouachita	1964	1936	AR-1	Film	
Corning	Clay	1949	1936	AR-1	Film	

<b>Series II</b>	<b>Arkansas</b>				
<b>City/Township</b>	<b>County</b>	<b>Date</b>	<b>Box #</b>	<b>Item/Reel Number</b>	<b>Format</b>
Cotton Plant	Woodruff	1950	1936	AR-1	Film
Dardanelle	Yell	1947	1936	AR-1	Film
De Queen	Sevier	1950	1936	AR-1	Film
Dermott	Chicot	1950	1936	AR-1	Film
Des Arc	Prairie	1950	1936	AR-1	Film
Dumas	Desha	1950	1936	AR-1	Film
Earle	Crittenden	1947	1936	AR-1	Film
El Dorado	Union	1969	1936	AR-1	Film
England	Lonoke	1948	1936	AR-1	Film
Eudora	Chicot	1950	1936	AR-1	Film
Eureka Springs	Carroll	1948	1936	AR-1	Film
Fayetteville	Washington	1967	1936	AR-1	Film
Fordyce	Dallas	1959	1936	AR-1	Film
Forrest City	St. Francis	1960	1936	AR-1	Film
Fort Smith	Sebastian	1964	1936	AR-1	Film
Fort Smith	Sebastian	1970	1936	AR-1	Film
Harrison	Boone	1960	1936	AR-2	Film
Heber Springs	Cleburne County	1950	1936	AR-2	Film
Helena	Phillips	1966	1936	AR-2	Film
Hope	Hempstead	1959	1936	AR-2	Film
Hot Springs	Garland	1968	1936	AR-2	Film
Jonesboro	Craighead	1967	1936	AR-2	Film
Lake Village	Chicot	1950	1936	AR-2	Film
Little Rock	Pulaski	1963	1936	AR-2	Film
Little Rock	Pulaski	1968	1936	AR-2	Film
Lonoke	Lonoke	1950	1936	AR-2	Film
McCrary	Woodruff	1944	1936	AR-2	Film
McGehee	Desha	1951	1936	AR-2	Film
Magnolia	Columbia	1966	1936	AR-2	Film
Malvern	Hot Spring	1952	1936	AR-2	Film
Marianna	Lee	1961	1936	AR-2	Film
Marked Tree	Poinsett	1950	1936	AR-2	Film
Mena	Polk	1960	1936	AR-2	Film
Monticello	Drew	1959	1936	AR-2	Film
Morrilton	Conway	1959	1936	AR-2	Film
Nashville	Howard	1961	1936	AR-3	Film
Newport	Jackson	1960	1936	AR-3	Film
Osceola	Mississippi	1964	1936	AR-3	Film
Paragould	Greene	1953	1936	AR-3	Film
Paris	Logan	1952	1936	AR-3	Film
Parkin	Cross	1949	1936	AR-3	Film
Piggott	Clay	1945	1936	AR-3	Film
Pine Bluff	Jefferson	1968	1936	AR-3	Film
Rector	Clay	1949	1936	AR-3	Film
Rogers	Benton	1961	1936	AR-3	Film
Russellville	Pope	1959	1936	AR-3	Film
Searcy	White	1960	1936	AR-3	Film
Siloam Springs	Benton	1961	1936	AR-3	Film
Stamps	Lafayette	1950	1936	AR-3	Film

<b>Series II</b>		<b>Arkansas</b>				
<b>City/Township</b>	<b>County</b>	<b>Date</b>	<b>Box #</b>	<b>Item/Reel Number</b>	<b>Format</b>	
Stuttgart	Arkansas	1963	1936	AR-3	Film	
Texarkana	Miller	1963	1936	AR-3	Film	
Texarkana	Miller	1964	1936	AR-3	Film	
Texarkana	Miller	1969	1936	AR-3	Film	
Truman	Poinsett	1945	1936	AR-3	Film	
Waldron	Scott	1946	1936	AR-3	Film	
Walnut Ridge	Lawrence	1961	1936	AR-3	Film	
Warren	Bradley	1959	1936	AR-3	Film	
West Memphis	Crittenden	1958	1936	AR-3	Film	

<b>Series III</b>		<b>Kentucky</b>				
<b>City</b>	<b>County</b>	<b>Date</b>	<b>Box #</b>	<b>Item/Reel Number</b>	<b>Format</b>	
Anchorage	Jefferson	1949	1738	KY-1	Film	
Ashland	Boyd	1968	1738	KY-1	Film	
Bardstown	Nelson	1951	1738	KY-1	Film	
Benton	Marshall	1948	1738	KY-1	Film	
Berea	Madison	1952	1738	KY-1	Film	
Bowling Green	Warren	1969	1738	KY-1	Film	
Burnside	Pulaski	1953	1738	KY-1	Film	
Campbellsville	Taylor	1951	1738	KY-1	Film	
Carlisle	Nicholas	1949	1738	KY-1	Film	
Carrollton	Carroll	1959	1738	KY-1	Film	
Central City	Muhlenberg	1946	1738	KY-1	Film	
Clay	Webster	1950	1738	KY-1	Film	
Cloverport	Breckinridge	1949	1738	KY-1	Film	
Corbin	Whitley, Knox	1961	1738	KY-1	Film	
Covington	Kenton	1963	1738	KY-1	Film	
Covington	Kenton	1964	1738	KY-1	Film	
Covington	Kenton	1980	1738	KY-1	Film	
Cynthiana	Harrison	1961	1738	KY-1	Film	
Danville	Boyle	1964	1738	KY-1	Film	
Elizabethtown	Hardin	1964	1738	KY-1	Film	
Eminence	Henry	1948	1738	KY-1	Film	
Frankfort	Franklin	1968	1738	KY-2	Film	
Franklin	Simpson	1948	1738	KY-2	Film	
Fulton	Fulton	1962	1738	KY-2	Film	
Georgetown	Scott	1961	1738	KY-2	Film	
Glasgow	Barren	1961	1738	KY-2	Film	
Harrodsburg	Mercer	1952	1738	KY-2	Film	
Hartford	Ohio	1950	1738	KY-2	Film	
Hickman	Fulton	1949	1738	KY-2	Film	
Hodgenville	LaRue	1952	1738	KY-2	Film	
Hopkinsville	Christian	1966	1738	KY-2	Film	
Horse Cave	Hart	1946	1738	KY-2	Film	
Irvine	Estill	1952	1738	KY-2	Film	
Jackson	Breathitt	1952	1738	KY-2	Film	
Lancaster	Garrard	1949	1738	KY-2	Film	
Lawrenceburg	Anderson	1951	1738	KY-2	Film	



<b>Series III</b>	<b>Kentucky</b>					
<b>City</b>	<b>County</b>	<b>Date</b>	<b>Box #</b>	<b>Item/Reel Number</b>		<b>Format</b>
Lebanon	Marion	1952	1738	KY-2		Film
Lexington	Lexington-Fayette	1957	1738	KY-2		Film
Lexington	Lexington-Fayette	1962	1738	KY-2		Film
Lexington	Lexington-Fayette	1963	1738	KY-2		Film
Lexington	Lexington-Fayette	1969	1738	KY-2		Film
Lexington	Lexington-Fayette	1970	1738	KY-2		Film
London	Laurel	1949	1738	KY-3		Film
Louisa	Lawrence	1952	1738	KY-3		Film
Louisville	Jefferson	1988	1738,	KY-3-6		Film
			1936			
Louisville	Jefferson	1990	1738,	KY-3-6		Film
			1936			
Louisville	Jefferson	1991	1738,	KY-3-6		Film
			1936			
Louisville	Jefferson	1992	1738,	KY-3-6		Film
			1936			
Mayfield	Graves	1962	1936	KY-6		Film
Maysville	Mason	1961	1936	KY-6		Film
Middlesboro	Bell	1959	1936	KY-6		Film
Monticello	Wayne	1950	1936	KY-6		Film
Morehead	Rowan	1949	1936	KY-6		Film
Morganfield	Union	1950	1936	KY-6		Film
Mount Sterling	Montgomery	1961	1936	KY-6		Film
Murray	Calloway	1951	1936	KY-6		Film
Newport	Campbell	1963	1936	KY-6		Film
Newport	Campbell	1969	1936	KY-6		Film
Nicholasville	Jessamine	1945	1936	KY-6		Film
Owensboro	Daviess	1963	1936	KY-7		Film
Owensboro	Daviess	1972	1936	KY-7		Film
Owenton	Owen	1947	1936	KY-7		Film
Paducah	McCracken	1972	1936	KY-7		Film
Paintsville	Johnson	1949	1936	KY-7		Film
Paris	Bourbon	1961	1936	KY-7		Film
Prestonburg	Floyd	1947	1936	KY-7		Film
Princeton	Caldwell	1956	1936	KY-7		Film
Richmond	Madison	1962	1936	KY-7		Film
Russell	Greenup	1946	1936	KY-7		Film
Russellville	Logan	1962	1936	KY-7		Film
Scottsville	Allen	1950	1936	KY-7		Film
Sebree	Webster	1946	1936	KY-7		Film
Shelbyville	Shelby	1960	1936	KY-7		Film
Somerset	Pulaski	1962	1936	KY-7		Film
Springfield	Washington	1951	1936	KY-7		Film
Stanford	Lincoln	1949	1936	KY-7		Film
Sturgis	Union	1946	1936	KY-7		Film
Uniontown	Union	1950	1936	KY-7		Film
Versailles	Woodford	1957	1936	KY-7		Film
Winchester	Clark	1961	1936	KY-7		Film