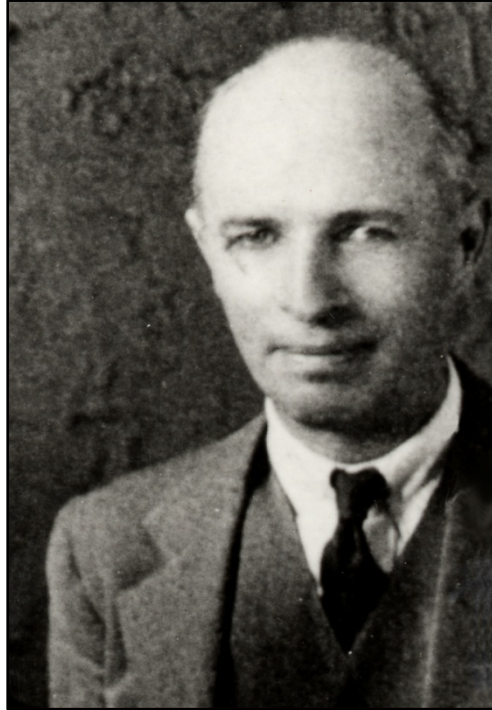


**Guide to the  
Little River Drainage District Records  
Group II: Engineer/Secretary Files  
Series VII: B.F. Burns  
1913-1953, [1920-1936]**

37.50 linear feet plus 1 oversized folder

2005.189



**Abstract**

Records of Benjamin F. Burns, Secretary/Treasurer of the Little River Drainage District (LRDD) from 1920-1953 and secretary for the engineering department from 1913-1919. Records consist primarily of correspondence with individual companies and persons regarding LRDD business matters, taxes, financial and banking matters, personnel, equipment and supplies.

Processed by: Lisa Graham, 2006  
Sarah Stephens, June 2009  
Kevin Mier, April 2011

## Descriptive Overview

**Provenance:** Donated by the Little River Drainage District Corporation, 2005.

**Citation:** Little River Drainage District Records, [Group], [Series], Special Collections and Archives, Southeast Missouri State University

**Separated Materials:** Oversized blueprints, sketches, and maps are located with other oversized materials in the collection.

### Biographical Note

Benjamin F. Burns served as secretary and treasurer simultaneously for the LRDD from 1920-1953. Burns worked for LRDD as an engineer prior to his position as secretary and treasurer. Burl Underwood succeeded him as secretary/treasurer.

### Scope and Content Note

Records consist of correspondence with individual companies and persons regarding LRDD business matters, taxes, financial and banking matters, personnel, equipment and supplies.

**Archivist Note:** This series was processed at different times by multiple people. Subseries 1 contains some folders with a number and volume number following the alphabetized letters, for example Aa-Af 10 Volume 2. These numbers were on the original folders and probably indicate their original filing order. Since the collection was processed at separate times, some folders have the numbers written on them while others do not. Because of this, the numbers were left off of the container list.

**Rules or Conventions:** Finding Aid prepared using DACS.

## Subseries Descriptions

### **Subseries 1: Alphabetized Correspondence**

Contains letters, postcards, and telegrams between Burns and individual people, companies, and LRDD personnel. Also includes brochures, product advertisements, and other order forms. Folders are arranged alphabetically and then chronologically.

### **Subseries 2: Chronological Correspondence**

Contains copies of letters sent by Burns to LRDD workers, businesses, collectors, and other persons. Subjects include taxes, receipts, meetings, payments, contracts, purchases, machinery. Folders are arranged chronologically.

### **Subseries 3: Right-of-Way Commissioner**

Correspondence between J. Wesley Black, right-of-way commissioner for the district between 1924 and 1926, and B. F. Burns as well as various property owners discussing land purchases. Subseries organized by volume number, listed on each folder, as copied from original files.

### **Subseries 4: Personal**

Includes two certificates from Springfield Business College for the completion of single entry and double entry bookkeeping coursework.

### **Subseries 5: Oversized**

Contains oversized blueprints, sketches, and maps removed from correspondence folders. Subjects include machinery, ditches, and properties. Items are arranged alphabetically.

## Table of Contents

Subseries 1 .....	4
Subseries 2 .....	11
Subseries 3 .....	11
Subseries 4 .....	13
Subseries 5 .....	13

## Container List

### Subseries 1      Alphabetized Correspondence

#### Box 1970

Folder 001-005	Aa-AI	1920 Sep-1951 Aug
Folder 006	Acom, O.H.	1950 May-1952 Dec
Folder 007	Am-Az	1920 Jan- 1922 Jun

#### Box 1971

Folder 001-005	Am-Az	1922 Jun-1935 Dec
----------------	-------	-------------------

#### Box 1972

Folder 001-006	Am-Az	1936 Feb-1951 Dec
Folder 007	American Surety Co.	1939 Mar-1943 Oct

#### Box 1973

Folder 001	Applications	1934 Dec-1948 Mar
Folder 002-003	Audit and Bond Co. of America	1920 Jan-1923 Oct
Folder 004-005	Audit and Bond Co. (name changed)	1923 Oct-1933 Mar
Folder 006-007	Ba-Bd	1920 Jan-1922 Dec

#### Box 1974

Folder 001-005	Ba-Bd	1923 Jan-1941 Apr
----------------	-------	-------------------

#### Box 1975

Folder 001-006	Ba-Bd	1941 Jan-1950 Jan
Folder 007	Baker, Charles B.	1950 Feb-1952 Sep
Folder 008	Bank of Advance	1940 Jan-1951 Jul

#### Box 1976

Folder 001-005	Be-Bh	1920 Mar-1943 Jun
Folder 006	Bi-Bn	1920 Jan-1922 Dec

#### Box 1977

Folder 001-002	Bi-Bn	1922 Dec-1936 Dec
Folder 003-006	Bo	1920 Jan-1937 Apr

#### Box 1978

Folder 001	Bo-Bq	1937 Apr-1945 Jan
------------	-------	-------------------

#### Box 1978

Folder 002	Bo-Bq	1945 Mar-1952 May
Folder 003-006	Br-Bt	1920 Jan-1936 Dec

#### Box 1979

Folder 001-006	Bu-Bz	1920 Jan-1935 Jan
----------------	-------	-------------------

#### Box 1980

Folder 001-004	Bu-Bz	1935 Jan-1949 Jan
Folder 005-008	Ca-Cd	1920 Jan-1929 Jun

<b>Subseries 1</b>	<b>Alphabetized Correspondence</b>	
<b>Box 1981</b>		
Folder 001-004	Ca-Cd	1929 Feb-1951 Dec
Folder 005-006	Ce-Ch	1920 Jan-1935 Jan
<b>Box 1982</b>		
Folder 001	Ce-Ch	1923 Jul-1936 Aug
Folder 002-006	Co-Cq [oversized removed Folder 002]	1920 Feb-1935 Dec
<b>Box 1983</b>		
Folder 001-005	Co-Cq	1937 Jan-1953 Jan
Folder 006-007	Cr-Cz	1920 Feb-1945 May
<b>Box 1984</b>		
Folder 001	Cr-Cz	1945 May-1952 Sep
Folder 002-003	Da-Dd	1920 Mar-1936 Nov
Folder 004-005	De-Dh	1920 Jan-1953 Feb
<b>Box 3610</b>		
Folder 001	Department of Commerce, Bureau of the Census	1937 Jul-1950 Oct
Folder 002-003	Department of Oil Inspection	1938 Oct-1950 May
<b>Box 1984</b>		
Folder 006	Di-Dq	1920 Mar-1933 Sep
<b>Box 1985</b>		
Folder 001-002	District Landowners Records	1935 Jan-1936 Mar
Folder 003-004	Dr-Dz	1920 Feb-1937 Jan
Folder 005-006	Ea-Em	1920 Jan-1933 Dec
<b>Box 1986</b>		
Folder 001	Ea-Em	1927 Jan-1937 Jan
Folder 002	Elliot Addressing Machine Co.	1925-1934
Folder 003-005	Ea-Em	1937 Jan-1946 Oct
Folder 006	Engineering Department Monthly Expenses	1913 Feb-1919 Jul
Folder 007	Engineering Office Correspondence	1919 Apr-1920 Feb
<b>Box 1986</b>		
Folder 008	Envelopes	1938 Apr-1952 Sep
Folder 009	En-Ez	1920 Jan-1925 Aug
<b>Box 1987</b>		
Folder 001	En-Ez	1925 Aug-1936 Nov
<b>Box 3610</b>		
Folder 004	Excerpts from Board of Supervisors Minutes	1948 Mar
<b>Box 1987</b>		
Folder 002-006	Fa-Fh	1919 Jun-1937 Jan

<b>Subseries 1</b>	<b>Alphabetized Correspondence</b>	
<b>Box 1988</b>		
Folder 001-003	Fa-Fh	1937 Jan-1951 Dec
Folder 004	Federal Excise Tax Exemption Certificate	1950 May-1952 Oct
Folder 005	First National Bank in St. Louis (St. Louis MO)	1920 Feb-1921 Nov
Folder 004-005	Fi-Fn	1920 Jan- 1936 Dec
<b>Box 1989</b>		
Folder 001-007	Fi-Fn	1921 Feb-1927 Dec
<b>Box 1990</b>		
Folder 001-002	Fi-Fn	1928 Jun-1936 Dec
Folder 003-005	Fo-Fz	1925 Jan-1936 Jan
Folder 006	Ga-Gg	1920 Jan-1924 Feb
<b>Box 1991</b>		
Folder 001-005	Ga-Gg	1924 Mar-1952 Nov
Folder 006-007	Gh-Gq	1924 Mar-1927 Oct
<b>Box 1992</b>		
Folder 001-002	Gh-Gq	1927 Oct-1952 Dec
Folder 003-005	Gideon-Anderson Lumber Co.	1935 Sep-1948 Dec
Folder 006	Gr-Gz	1920 Feb-1924 Feb
<b>Box 1993</b>		
Folder 001-007	Gr-Gz	1921 Jan-1944 Dec
<b>Box 1994</b>		
Folder 001	Gr-Gz	1945 Jan-1952 Dec
Folder 002	Gray, Walter (Sturdivant MO)	1940 Jan-1942 Mar
Folder 003-004	Haa-Han	1920 Jan-1946 Jul
Folder 005-006	Hag-Hd	1928 Mar-1936 Dec
Folder 007	Hao-Hd	1920 Jan-1921 Oct
<b>Box 1995</b>		
Folder 001-004	Hao-Hd	1921 Oct-1953 Feb
Folder 005-006	Ha-Ho	1937 Jan-1943 Dec
<b>Box 2799</b>		
Folder 001-006	He-Hh	1920 Jan-1952 Dec
<b>Box 2487</b>		
Folder 001-003	Hi-Hn	1920 Jan-1952 Nov
<b>Box 2800</b>		
Folder 001-006	Hidinger, L.L.	1918 Dec-1934 Apr
Folder 007	Himmelberger, J.H.	1927 Oct
Folder 008	Ho-Ht	1917 Jul-1923 Mar

<b>Subseries 1</b>	<b>Alphabetized Correspondence</b>	
<b>Box 2801</b>		
Folder 001-006	Ho-Ht	1923 Apr-1953 Feb
<b>Box 2802</b>		
Folder 001	Hu-Hz	1937 Jan-1952 Jun
Folder 002-003	I	1920 Jan-1953 Feb
Folder 004-007	Ja-Jl	1920 Jan-1944 Jul
<b>Box 2803</b>		
Folder 001	Ja-Jl	1940 Feb-1941 Dec
Folder 002-004	Jm-Jz	1920 Jan-1953 Feb
Folder 005-007	Ka-Kg	1920 Mar-1935 Mar
<b>Box 2804</b>		
Folder 001-003	Ka-Kg	1928 May-1953 May
Folder 004	Kappler, Martin	1920 Oct-1922 Jul
Folder 005-006	Kauffman-Smith Co.	1920 Jan-1924 Jan
<b>Box 2805</b>		
Folder 001-004	Kauffman-Smith Co.	1923 Jan-1931 Mar
Folder 005	Kersey, A. Parker	1919 Jan-1927 Jun
Folder 006	Kh-Kn	1920 Feb-1936 Dec
<b>Box 2806</b>		
Folder 001-002	Kh-Kn	1937 Apr-1943 May
Folder 003-005	Ko-Kz	1920 Mar-1952 Dec
Folder 006-007	La-Ld	1920 Feb-1936 Aug
<b>Box 2807</b>		
Folder 001	La-Ld	1937 Jan-1951 Sep
<b>Box 3610</b>		
Folder 005	Land Sale Information	1936 Dec-1941 May
<b>Box 2807</b>		
Folder 002-004	Le-Ln [oversized blueprints removed Folder 3]	1920 Jan -1952 Dec
Folder 006	Lo-Lz	1920 Mar-1924 Dec
<b>Box 2808</b>		
Folder 001	Lo-Lz	1925 Jan-1936 Nov
<b>Box 3610</b>		
Folder 006	Lo-Lz	1937 Apr-1951 Dec
<b>Box 2808</b>		
Folder 002	Lufey, Herman	1921 Apr-1929 Jul
Folder 003	Lutes, W.L.	1923 Mar-1927 May
Folder 004-005	Maa-Mao	1920 Jan-1952 Nov
Folder 006-007	Map-Mb	1920 Mar-1929 Mar

<b>Subseries 1</b>	<b>Alphabetized Correspondence</b>	
<b>Box 2809</b>		
Folder 001-002	Map-Mb	1929 May-1953 Jan
Folder 003-004	Ma-Mb	1937 Feb-1944 Aug
Folder 005-006	Mare and Co.	1933 Jun-1952 Nov
Folder 007-008	Marlow, L.	1924 Feb-1934 Mar
<b>Box 2810</b>		
Folder 001-003	Martin, Mark	1931 Nov-1938 Feb
Folder 004	Mc	1920 Dec-1922 Apr
Folder 005-006	Mca-Mch	1937 Mar-1952 Feb
Folder 007	Mch-Mct	1922 May-1923 Dec
<b>Box 2811</b>		
Folder 001-002	Mch-Mct	1924 Jun-1936 Oct
Folder 003	Mci-Md	1938 Mar-1947 Jan
Folder 004-007	Me	1920 Jan-1936 Oct
Folder 008	Me-Mh	1937 Jan-1938 Nov
<b>Box 2812</b>		
Folder 001	Me-Mh	1939 Apr-1952 May
Folder 002	Mi	1920 Oct-1936 Oct
Folder 003-005	Mi-Mn	1937 Feb-1952 Sep
Folder 006	Missouri Pacific Lines	1945 Jan-1946 May
<b>Box 3610</b>		
Folder 007	Missouri Conversation Commission	1948 May
<b>Box 2812</b>		
Folder 007-009	Mis	1919 Dec-1926 Aug
<b>Box 2813</b>		
Folder 001-002	Mis	1926 Sep-1936 Oct
Folder 003	Misc.	1922 Mar-1923 May
Folder 004-008	Mo-Mt	1920 Jan-1934 Oct
<b>Box 2814</b>		
Folder 001-003	Mo-Mt	1934 Nov-1952 Aug
Folder 004	Mo Conservation Commission	1950 Jun-1952 Sep
Folder 005-006	Morgan Engineering Commission	1919 May-1935 Dec
Folder 007-008	Mu-Mz	1920 Jan-1952 May
<b>Box 2815</b>		
Folder 001-005	Na-Nh	1920 Jan-1953 Feb
Folder 006-007	National Drainage Association	1927 Mar-1930 Dec
<b>Box 2816</b>		
Folder 001-004	National Drainage Association	1931 Jan-1936 Jan



<b>Subseries 1</b>	<b>Alphabetized Correspondence</b>	
<b>Box 3610</b>		
Folder 008-009	National Drainage, Levee and Irrigation Association	1931-1940 Feb
Folder 010	Newspaper Clipping File	1948-1950
Folder 011	Newspapers- Articles, Joint Letters	1923 Sep-1947 Nov
<b>Box 2816</b>		
Folder 005-006	Ni-Nz	1920 Jun-1952 Apr
Folder 007-008	O	1920 Jan-1927 Oct
<b>Box 2817</b>		
Folder 001	O	1927 Nov-1934 Dec
Folder 002-005	Oliver	1920 Jan-1927 Dec
Folder 006	Pa-Ph	1920 Jan-1922 Sep
<b>Box 2488</b>		
Folder 001-008	Pa-Ph	1922 Oct-1942 Dec
<b>Box 2489</b>		
Folder 001	Pa-Ph	1943 Feb-1952 Jun
Folder 002	Personal Correspondence	1919 May-1921 Oct
Folder 003	Perkins, Dale B. & Berdie	1947 Jul
Folder 004-005	Pi-Pz	1920 Jan- 1944 Jun
<b>Box 2818</b>		
Folder 001	Pi-Pz	1946 Feb-1953 Jan
Folder 002-003	Po-Pu	1925 Jan-1936 Oct
Folder 004	Q	1921 Jul-1938 Nov
Folder 005-007	Ra-Rd	1920 Jan-1952 Sep
Folder 008	Re-Rg	1913 Oct-1926 Jan
<b>Box 2819</b>		
Folder 001-003	Re-Rg	1926 Jan-1952 Aug
Folder 004-005	Reclamation Construction Co.	1921 Feb-1931 Dec
Folder 006-007	Reynolds, O. L.	1920 Jun-1933 Sep
Folder 008	Reynolds, S. P. (Caruthersville MO)	1937 Jan- 1952 Oct
<b>Box 3610</b>		
Folder 012	Reynolds, S.P.	1946 Dec-1952 Feb
<b>Box 2820</b>		
Folder 001-002	Rh-Rn	1920 Jan-1952 Sep
Folder 003	Ross, Charles G.	1926 Dec-1935 Jan
Folder 004-006	Ro-Rt	1920 Feb-1939 Jun
<b>Box 2821</b>		
Folder 001-002	Ro-Rt	1939 May-1952 Jul
Folder 003-007	Ru-Rz	1920 Jan-1950 Dec

<b>Subseries 1</b>	<b>Alphabetized Correspondence</b>	
<b>Box 2822</b>		
Folder 001	Ru-Rz	1951 Jan-1953 Jan
Folder 002-003	Sa-Sb	1920 Oct-1951 Jan
Folder 004-006	Sc-Sd	1920 Jan-1952 Nov
Folder 007	Scott County Abstract Co.	1920 Jul-1935 Jul
Folder 008	Schultz, Earl	1922 Apr-1936 Dec
<b>Box 2823</b>		
Folder 001-004	Se-Sh	1920 Feb-1953 Feb
Folder 005-007	Si-Sm	1920 Jan-1930 Feb
<b>Box 2824</b>		
Folder 001-005	Si-Sm	1930 Mar-1952 Sep
Folder 006	Sn-Ss	1920 Jan-1936 Nov
<b>Box 2825</b>		
Folder 001-003	Sn-Ss	1938 Jun-1952 Jul
Folder 004	Southeast Missouri Trust Co.	1920 Feb-1928 Mar
Folder 005	Southeast Missouri Lumber Co.	1920 Feb-1938 Feb
Folder 006	Southeast Missourian	1921 Jan-1937 Oct
Folder 007	Southern Hardware and Supply Co.	1920 Feb-1922 Jan
Folder 008	Southern Surety Co.	1922 Nov-1928 May
<b>Box 2826</b>		
Folder 001	Southwestern Bell Telephone Co.	1921 Jun-1933 Sep
Folder 002	Southwest Mortgage Co.	1924 Sep-1930 Dec
Folder 003-008	St	1920 Jan-1939 Oct
<b>Box 2827</b>		
Folder 001-002	St	1940 Jun-1952 Sep
Folder 003	St. Louis Blue Print and Supply Co.	1920 Jan-1935 Sep
Folder 004	St. Louis San Francisco Railroad Co.	1920 Apr-1928 Nov
Folder 005	St. Louis Southwestern Railroad	1920 Dec-1936 Dec
Folder 006-007	Standard Oil Co.	1920 Oct-1937 Oct
Folder 008	Standard Printing Co.	1920 Jan-1921 Sep
<b>Box 2828</b>		
Folder 001	Standard Printing Co.	1921 Oct-1927 Aug
Folder 002	Stearns, P.J.	1931 Jan-1936 Feb
Folder 003-004	Steck, Emil	1923 Feb-1935 Apr
Folder 005	Stoddard County Abstract Land and Loan Co. [oversized blueprints removed]	1920 Mar-1929 May
Folder 006	Stoddard County Trust Co.	1921 May-1928 Mar
Folder 007	Stokes, W.M.	1920 May-1925 May
<b>Box 2828</b>		
Folder 008-009	Sturdivant Bank	1920 Jun-1926 Mar

<b>Subseries 1</b>	<b>Alphabetized Correspondence</b>	
<b>Box 2829</b>		
Folder 001	Sturdivant Bank	1926 Mar-1933 Mar
Folder 002	Su-Sz	1920 Jun-1936 Oct
Folder 003-004	Ta-Th	1920 Jan-1936 Nov
Folder 005	Telegrams	1920 Jul-1922 Apr
Folder 006-008	Ti-Tz	1919 Dec-1943 Mar
<b>Box 2830</b>		
Folder 001-002	Ti-Tz	1943 Mar-1952 Nov
Folder 003-005	U	1920 Jan-1936 Dec
Folder 006	U.S. Department of Agriculture	1921 Jul-1936 Sep
Folder 007	V [oversized blueprint removed]	1920 Mar-1936 Jan
<b>Box 2831</b>		
Folder 001-002	Wa-Wd	1920 Apr-1936 Sep
Folder 003-005	Walb, Clyde A.	1921 Apr-1925 Mar
Folder 006	Weber Abstract Land and Loan Co.	1920 Jan-1936 Jan
Folder 007	We-Wg	1920 Jan-1926 Jan
<b>Box 2832</b>		
Folder 001	We-Wg	1926 Feb-1936 Feb
Folder 002	A.V. Wills and Sons Contractors	1920 Jun-1926 May
Folder 003-005	Wi-Wh	1919 Oct-1936 Dec
Folder 006	Wh	1920 Jun-1925 Aug
<b>Box 2833</b>		
Folder 001	Wh	1925 Aug-1936 Jun
Folder 002-003	X, Y, and Z	1921 Jan-1936 Feb
<b>Subseries 2</b>	<b>Chronological Correspondence</b>	
<b>Box 2833</b>		
Folder 004-007	Correspondence	1942 Jan – 1942 Apr
<b>Box 2834</b>	Correspondence	1942 Feb- 1942 Dec
<b>Box 2835</b>	Correspondence	1942 Aug-1943 Apr
<b>Box 2836</b>	Correspondence	1943 Apr-1943 Oct
<b>Box 2837</b>	Correspondence	1943 Oct-1944 Aug
<b>Box 3362</b>	Correspondence	1944 May-1945 Aug
<b>Box 3363</b>	Correspondence	1945 Feb-1946 Sep
<b>Box 3364</b>	Correspondence	1947 Apr-1949 Dec
<b>Box 3365</b>	Correspondence	1949 Oct-1953 Feb
<b>Subseries 3</b>	<b>Right-of-Way Commissioner</b>	
<b>Box 3369</b>		
Folder 001	Ditch 1 West Side	1924 Oct-1925 Jan
Folder 002	Gideon-Anderson Lumber Co.	1924 Nov-1925 May
Folder 003	Caney Basin	1925 May
Folder 004	Ditch 70	1925 Aug

**Subseries 3**  
**Box 3369**

**Right-of-Way Commissioner**

Folder 005	James F. Halley	1924 Nov
Folder 006	Ditch 71	1924 Oct-1925 Jul
Folder 007	Ditch 76	Undated
Folder 008	R. G. Holgate	1924 Oct-1925 Jan
Folder 009	Ditch 281	Undated
Folder 010	Right-of-Way Conveyances, Vol. #9	1925 Jan
Folder 011	E. P. Melson	1924 Oct-1925 Jan
Folder 012	Ditch 293	1924 Nov
Folder 013	Ditch 77	Undated
Folder 014	Ditch 78	Undated
Folder 015	Emmet & J. R. Watson	1924 Oct-1924 Nov
Folder 016	Little River Farms Co.	1924 Oct
Folder 017	Henry C. Sparks	1924 Oct
Folder 018	H. W., R. M. & D. K. Rice	1924 Oct-1925 Jan
Folder 019	John G. Hoyt, Plats of Little River Farms Land Co.	1924 Oct-1924 Dec
Folder 020	Helen McCombs Bright	1924 Oct-1924 Dec
Folder 021	C. D. Matthews Jr.	1924 Oct-1924 Dec
Folder 022	Alluvial Reality Company	1924 Oct
Folder 023	Thomas Crites	1924 Oct
Folder 024	John McQuoid	1924 Oct
Folder 025	Dunkscot Land Co.	1924 Oct
Folder 026	Right-of-Way Conveyance, Vol. #26	1924 Sep-1925 Sep
Folder 027	Ditch 84	1925 Feb-1925 May
Folder 028	Ditch #291	1924 Sep-1925 Apr
Folder 029	Ditch 251	1924 Sep-1925 Aug
Folder 030	Ditch 258	1924 Sep-1925 Aug
Folder 031	Ditch 72	1924 Dec-1925 Jan
Folder 032	Ditch 75	1924 Dec
Folder 033	Ditch 74	1924 Nov
Folder 034	Ditch 294	1924 Dec-1925 Jan
Folder 035	Ditch 237	1924 Oct-1925 Feb
Folder 036	Ditch #291	1924 Dec-1925 Apr
Folder 037	Caney Creek Basin	1924 Oct-1925 Mar
Folder 038	Henry P. Rusk	1924 Oct-1925 Jan
Folder 039	R. B. Oliver	1924 Sep-1925 Jan

**Box 3600**

Folder 001	Wisconsin Lumber Co.	1924 Oct-1924 Nov
Folder 002	Section 1-17-9	1925 Jan-1925 Feb
Folder 003	A. B. Smith & Drew Vardell	1924 Dec-1925 Mar
Folder 004	Ditch 69	1924
Folder 005	Ditch 68	1924
Folder 006	Ditch 73	1924 Nov
Folder 007	Ditches #42 & #43	1924 Sep-1925 May
Folder 008	Gene Rommel	1924 Dec-1925 Apr
Folder 009	Oliver & Oliver	1925 Apr
Folder 010	Ditch 290, West Side	1924 Nov-1925 Apr
Folder 011	Ditch 287	1924 Oct-1925 Mar

**Subseries 4****Right-of-Way Commissioner****Box 3600**

Folder 012	J. H. & J. N. Friant	1924 Oct-1925 Jan
Folder 013	Ditch 292	1925 Mar
Folder 014	Ditch 43	1924 Oct-1925 Apr
Folder 015	Himmelberger-Harrison Lumber Co.	1924 Nov-1925 Jan
Folder 016	Jenkins Basin & Ditch 287 (Perkins, Dale B.)	1925 Feb-1925 Sep
Folder 017	Ditch 25, New Madrid County	1925 Apr-1925 Jun
Folder 018	New Madrid County Ditch 25, Heirs of Caroline Kochtitzky	1924 Sep-1925 Jan
Folder 019	Right-of-Way Conveyances Vol. #59	1924 Feb-1925 Jul
Folder 020	Right-of-Way Conveyances Vol. #60	1924 Sep-1924 Dec
Folder 021	Right-of-Way Conveyances Vol. #61	1925 Jan-1925 Jul
Folder 022	Right-of-Way Conveyances Vol. #63	1924 Dec
Folder 023	Right-of-Way Conveyances Vol. #64	1925 Jan

**Box 2870**

Folder 001	Right-of-Way Conveyances, Vol. 65	1924 Oct-1924 Nov
Folder 002	Right-of-Way Conveyances, Vol. 66	1924 Aug-1925 Oct
Folder 003	Right-of-Way Conveyances, Vol. 67	1925 Jun-1925 Jul
Folder 004	Indemnity Co. of America	1924 Oct-1925 Dec
Folder 005	Dr. Killian	1926 Apr-1926 May
Folder 006	Louis & Mary Halter	1926 Jul-1926 Dec
Folder 007	Right-of-Way Conveyances, Vol. 71	1925 May-1925 Jun
Folder 008	Right-of-Way Conveyances, Vol. 72	1925 Aug-1925 Nov
Folder 009	Right-of-Way Conveyances, Vol. 73	1924 Dec-1925 Feb
Folder 010	Right-of-Way Conveyances, Vol. 73	1925 Mar-1925 Dec

**Subseries 4****Personal****Box 3610**

Folder 013	Springfield Business College Certificates	1893 Jan 5, May 11
------------	---	--------------------

**Subseries 5****Oversized****MMC 8.5**

Folder 001		
Item 001	Adjustable Bracket from Coldwell-Wilcox Co., blueprint	1925 Feb
Item 002	Bronze Mounted Sluice, blueprint	Undated
Item 003	Direct Pressure Slice Gate from Coldwell-Wilcox Co., blueprint	1925 Feb
Item 004	Double Arm Pedestal from Coldwell-Wilcox Co., blueprint	1925 Feb
Item 005	Geared Floor Stand from Ludlow Valve Manufacturing Co., blueprint	Undated
Item 006	LRDD, marked on map	
Item 007	LRDD Map Showing Louis Rau Property, blueprint	1912 Jan
Item 008	New Madrid S., blueprint	Undated
Item 009	No Wedge Sluice Gate from Coffin Valve Co., blueprint	1925 Feb
Item 010	Plans and Details of Sluiceway in Ditch No. 80, blueprint	Undated
Item 011	Sluice Gate from Ludlow Valve Manufacturing Co., blueprint	Undated
Item 012	St. Louis Southwestern Railroad Plat Showing Drainage, blueprint	1920 Apr

Item 013	Toe Spoil and Right of Way Line Along Ditch No. 42, sketch	Undated
<b>Subseries 5</b>	<b>Oversized</b>	
<b>MMC 8.5</b>		
Folder 001		
Item 014	Land of Mrs. Mary Heisserer in Sections 1, 2, 12, Twp 28, R12 Scott Co. Mo.	Undated
Item 015	Profile along south line Sec 8 twp 28 R 12 (Andy Pobst)	Undated
Item 016	Phillipy Claim, showing Ditches Nos. 1, 55, 55A, 56, 56A, and 60	Undated
Item 017	Sketch showing location of Missouri General Utilities Co. electric line across Castor River Diversion Channel. Section 5, Welch township, Cape Girardeau Co.	Undated (1937-1948)
Items 018-019	Edited articles on the Little River Drainage District for Moody's Governemtn and Municipal Manual	Undated (1937-1955)